



chill index



[www.orford.com.au](http://www.orford.com.au)



## Orford Chill Index— Flower Fridges 4U™

Benefits of Orford Flower Fridges Page 2

Flower Fridge Energy Figures Page 3

EB30R-SN-Flower Page 5

EB30R-SN-PT-Flower Page 8

EB36R-Sn-Flower Page 6

EB36R-SN-PT-Flower Page 9

EB45R-Sn-Flower Page 7

EB45R-SN-PT-Flower Page 10

Equipment Finance Page 11

Flower Fridge Artwork Page 12

Contact Orford—1300 673 673 Page 13



# chill index



Do you have an ABN?  
Contact us for a trade discount!

## Benefits of Buying an ORFORD FLOWER CABINET

- ⇒ The Orford EB Flower series incorporates the Orford PlanetSmart™ technology
- ⇒ Present your lowers in perfect condition
- ⇒ Ducted air flow for even temperature preventing damage to flowers
- ⇒ Extend the shelf life of flowers
- ⇒ Australian engineered Florist Refrigerated cabinet
- ⇒ Australian product manuals
- ⇒ Spare parts available
- ⇒ Technical support
- ⇒ Lower running costs
- ⇒ Electrically compliant
- ⇒ MEPS approved



PlanetSmart is protected by Trademark No 1358049

## Buyers Shopping List

What to consider when purchasing

- ⇒ Is the refrigerator engineered to be a flower cabinet or is it actually a drink fridge
- ⇒ Is artwork available to make your flower fridge look more stunning
- ⇒ Does the refrigerator extend the shelf life of flowers
- ⇒ Is the refrigerator whisper quiet
- ⇒ Is the refrigerator Energy efficient ie what does it cost to run
- ⇒ Can I get technical support
- ⇒ Are spare parts available
- ⇒ Is it MEPS approved and fully electrically certified

September 2022 Edition : All efforts are taken to ensure accuracy but from time to time specs may change without notice



Flower Fridges 4U is protected by Trademark No 1746609

☎ 1300 ORFORD (1300 673 673)

☎ +617 4641 7372

✉ [sales@orford.com.au](mailto:sales@orford.com.au)

[www.orford.com.au](http://www.orford.com.au)

✉ PO Box 18120  
Clifford Gardens  
Queensland 4350  
Australia



A Florist rated commercial refrigerator allows you to present flowers to your customers in perfect condition.

A Flower Fridge will extend the shelf life of your stock. Extending shelf life means money in your pocket.

Conserve precious cash flow, Flower Fridges 4 U can arrange full finance on your high end equipment .

Phone 1300 ORFORD



### PlanetSmart™ Technology—what does this mean?

Being PlanetSmart™ is about leaving the planet slightly better than how you found it.

What will your Flower Fridge cost to run

Many florists work from home and the cost of electricity is a major issue for them.

Don't get caught up worrying about electricity costs. Invest in energy efficient refrigeration

[www.orford.com.au](http://www.orford.com.au) or [www.flowerfridges4u.com.au](http://www.flowerfridges4u.com.au)

Do you have an ABN?  
Contact us for a trade discount!

Orford  
REFRIGERATION

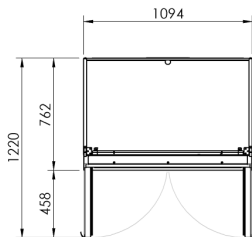
Orford EB Flower	Energy Consumption @3M1 kWh/24hr Calcs based on power at .28c per day
Orford EB30R-A-Flower	3.78 @.28c = \$1.05 per day = \$386.32 pa
Orford EB30R-Sn-A-flower (signbox on)	4.24 @ .28 = \$1.18 per day = \$433.33 pa
Orford EB36R-A-Flower	4.28 @ .28c = \$1.20 per day = \$428.00 pa
Orford EB36R-Sn-A-Flower (signbox on)	4.74 @ .28c = \$1.33 per day = \$485.45 pa
Orford EB45R-A-Flower	5.45 @ .28c = \$1.53 per day = \$558.45 pa
Orford EB45R-Sn-A-Flower (signbox on)	6.03 @ .28c = \$1.69 per day = \$616.85 pa



Do you have an ABN?  
Contact us for a trade discount!

<i>EB30R-Sn-Flower</i>	Vertical Flower Refrigerator with Illuminated Advertising Sign
Flower Cabinet	Designed to extend the shelf life of fresh flowers
Capacity	895 Litres (Gross)
Dimensions	1094W x 762D x 2220H
Weight	210Kg
Florist Benefits	Temperature Management for flowers
Colours	Ebony Black, and Snow White
Power Point	220 - 240v 50Hz. (Standard GPO)
Input Current	2.9 Amps
Thermometer	Digital
Shelves	8 Height Adjustable Heavy Duty PVC Coated
Shelves	2 Fixed Stainless Steel Base Shelves
Shelf Adjustment	12mm Increments
Door	2 x Self Closing, Double Glazed Safety Glass, Double Heat reflective Low E, Warm edge
Footings	Heavy Duty Castors, Lockable Front
Interior Light	LED, Automatic and manual control
Refrigerant	R134a
Cabinet Classes	3M1, 4M1, 5M1
MEPS	Compliant (High Efficiency)
* Energy Consumption	4.24 kWh/24h
Condenser Filter	Easy front access
Illuminated Advertising Sign	200mm High, Top Mounted
Sign Illumination	LED, Automatic and manual control

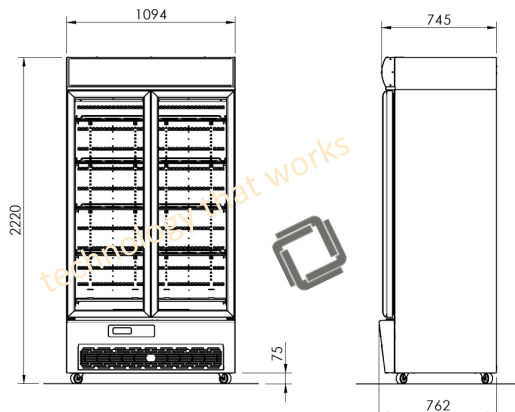
RRP : \$4324 + GST  
Orford EB30R-Sn-A-Flower



IP Protected by AUS DSN no 345317  
& Patent NO 2013100761

Daily running costs based on power costs of .28c per kW

- \$1.20 per day with sign box off
- \$1.33 per day with sign box on



For more information on the Orford Refrigeration flower Range including features & benefits refer to

[www.flowerfridges4u.com.au](http://www.flowerfridges4u.com.au)



Do you have an ABN?  
Contact us for a trade discount!

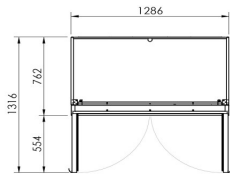
<b>EB36R-Sn-Flower Specifications</b>	<b>Vertical Flower Refrigerator with Illuminated Advertising Sign</b>
Flower Cabinet	Designed to extend the shelf life of fresh flowers
Capacity	1071 Litres (Gross)
Dimensions	1286W x 762D x 2220H
Weight	221Kg
Florist Benefits	Temperature Management for flowers
Colours	Ebony Black, and Snow White
Power Point	220 - 240v 50Hz. (Standard GPO)
Input Current	2.9 Amps
Thermometer	Digital
Shelves	8 Height Adjustable Heavy Duty PVC Coated
Shelves	2 Fixed Stainless Steel Base Shelves
Shelf Adjustment	12mm Increments
Door	2 x Self Closing, Double Glazed Safety Glass, Double Heat reflective Low E, Warm edge
Footings	Heavy Duty Castors, Lockable Front
Interior Light	LED, Automatic and manual control
Refrigerant	R134a
Cabinet Classes	3M1, 4M1, 5M1
MEPS	Compliant (High Efficiency)
* Energy Consumption	4.74 kWh/24h
Condenser Filter	Easy front access
Illuminated Advertising Sign	200mm High, Top Mounted
Sign Illumination	LED, Automatic and manual control

**RRP : \$4786 + GST**  
**EB36R-Sn-A-Flower**

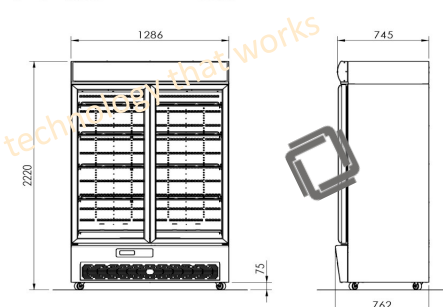


Daily running costs based on power costs of .28c per kW

- \$1.20 per day with sign box off
- \$1.33 per day with sign box on



IP Protected by AUS DSN no 345317  
& Patent NO 2013100761



For more information on the Orford Refrigeration flower Range including features & benefits refer to

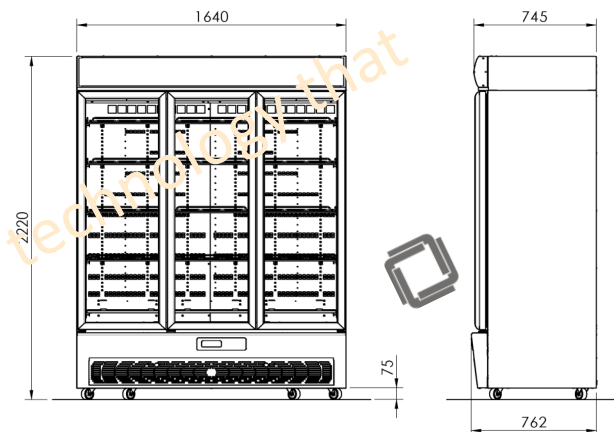
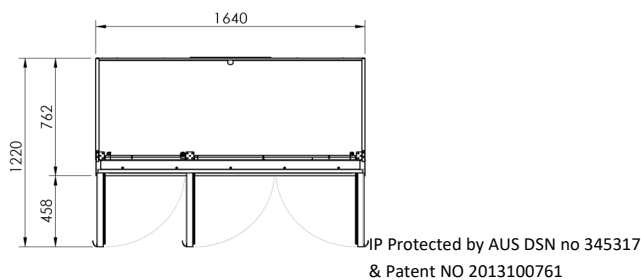
[www.flowerfridges4u.com.au](http://www.flowerfridges4u.com.au)



Do you have an ABN?  
Contact us for a trade discount!

Specifications	EB45R-Sn-Flower Vertical Flower Refrigerator with Illuminated Advertising Sign
Flower Cabinet	Designed to extend the shelf life of fresh flowers
Capacity	1384 Litres (Gross)
Dimensions	1640W x 762D x 2220H
Weight	265 Kg
Florist Benefits	Temperature Management for flowers
Colours	Ebony Black, and Snow White
Power Point	220 - 240v 50Hz. (Standard GPO)
Input Current	3.2 Amps
Thermometer	Digital
Shelves	12 Height Adjustable Heavy Duty PVC Coated
Shelves	3 Fixed Stainless Steel Base Shelves
Shelf Adjustment	12mm Increments
Door	3 x Self Closing, Double Glazed Safety Glass, Double Heat reflective Low E, Warm edge
Footings	Heavy Duty Castors, Lockable Front
Interior Light	LED, Automatic and manual control
Refrigerant	R134a
Cabinet Classes	3M1, 4M1, 5M1
MEPS	Compliant (High Efficiency)
* Energy Consumption	6.03 kWh/24h
Condenser Filter	Easy front access
Illuminated Advertising Sign	200mm High, Top Mounted
Sign Illumination	LED, Automatic and manual control

RRP : \$5907 + GST  
EB45R-Sn-A-Flower



Daily running costs based on power costs of .28c per kW

- \$1.53 per day with sign box off
- \$1.69 per day with sign box on



Flower Fridges 4 U

For more information on the Orford Refrigeration flower Range including features & benefits refer to

[www.flowerfridges4u.com.au](http://www.flowerfridges4u.com.au)

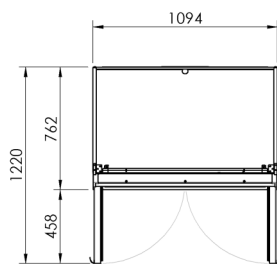




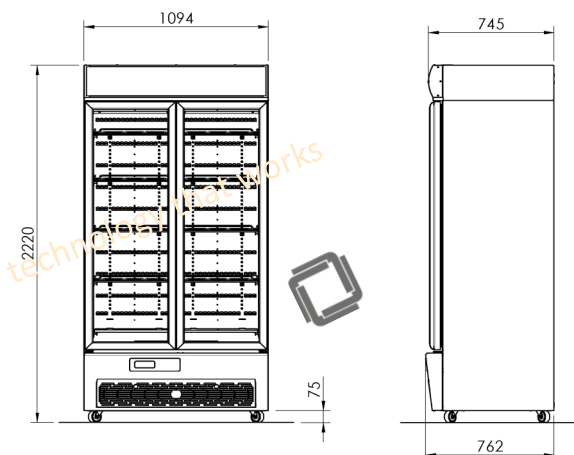
Do you have an ABN?  
Contact us for a trade discount!

EB30R-Sn-Flower Specifications	Vertical Flower Refrigerator with Illuminated Advertising Sign
Flower Cabinet	Designed to extend the shelf life of fresh flowers
Capacity	895 Litres (Gross)
Dimensions	1094W x 762D x 2220H
Weight	210Kg
Florist Benefits	Temperature Management for flowers
Colours	Ebony Black, and Snow White
Power Point	220 - 240v 50Hz. (Standard GPO)
Input Current	2.9 Amps
Thermometer	Digital
Shelves	8 Height Adjustable Heavy Duty PVC Coated
Shelves	2 Fixed Stainless Steel Base Shelves
Shelf Adjustment	12mm Increments
Door	2 x Self Closing, Double Glazed Safety Glass, Double Heat reflective Low E, Warm edge
Footings	Heavy Duty Castors, Lockable Front
Interior Light	LED, Automatic and manual control
Refrigerant	R134a
Cabinet Classes	3M1, 4M1, 5M1
MEPS	Compliant (High Efficiency)
* Energy Consumption	4.24 kWh/24h
Condenser Filter	Easy front access
Illuminated Advertising Sign	200mm High, Top Mounted
Sign Illumination	LED, Automatic and manual control

RRP : \$4622 + GST (Rear Loading)  
Orford EB30R-Sn-PT- Flower



IP Protected by AUS DSN no 345317  
& Patent NO 2013100761



This specialty Flower Fridge has rear doors allowing you to load the fridge from the rear. Rear loading fridges provide you with more decorating options in your shop



For more information on the Orford Group flower Range including features & benefits refer to

[www.flowerfridges4u.com.au](http://www.flowerfridges4u.com.au)



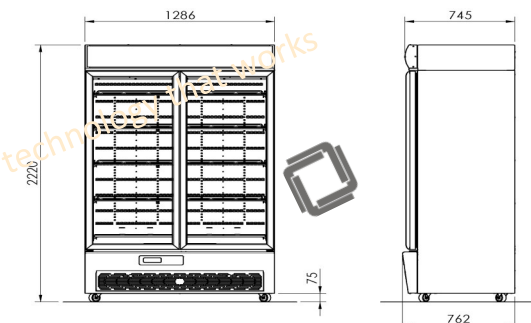
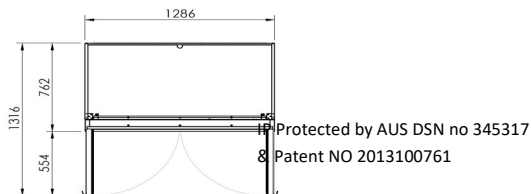


Do you have an ABN?  
Contact us for a trade discount!

EB36R-Sn-PT Flower Specifications	Vertical Flower Refrigerator with Illuminated Advertising Sign
Flower Cabinet	Designed to extend the shelf life of fresh flowers
Capacity	1071 Litres (Gross)
Dimensions	1286W x 762D x 2220H
Weight	221Kg
Florist Benefits	Temperature Management for flowers
Colours	Ebony Black, and Snow White
Power Point	220 - 240v 50Hz. (Standard GPO)
Input Current	2.9 Amps
Thermometer	Digital
Shelves	8 Height Adjustable Heavy Duty PVC Coated
Shelves	2 Fixed Stainless Steel Base Shelves
Shelf Adjustment	12mm Increments
Door	2 x Self Closing, Double Glazed Safety Glass, Double Heat reflective Low E, Warm edge 2 Rear doors allowing fridge to be loaded from rear
Footings	Heavy Duty Castors, Lockable Front
Interior Light	LED, Automatic and manual control
Refrigerant	R134a
Cabinet Classes	3M1, 4M1, 5M1
MEPS	Compliant (High Efficiency)
* Energy Consumption	4.74 kWh/24h
Condenser Filter	Easy front access
Illuminated Advertising Sign	200mm High, Top Mounted
Sign Illumination	LED, Automatic and manual control

RRP : \$5193 + GST (Rear Loading)

EB36R-Sn-PT- Flower



This specialty Flower Fridge has rear doors allowing you to load the fridge from the rear. Rear loading fridges provide you with more decorating options in your shop



For more information on the Orford Refrigeration flower fridge Range including features & benefits refer to

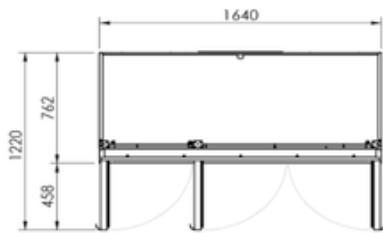
[www.flowerfridges4u.com.au](http://www.flowerfridges4u.com.au)



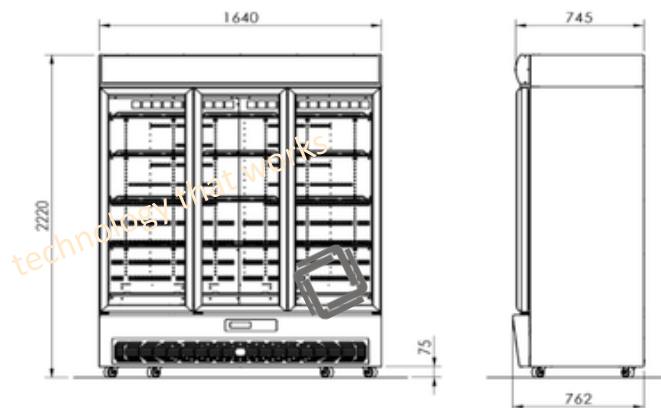
Do you have an ABN?  
Contact us for a trade discount!

EB45R-Sn-PT Flower Specifications	Rear Loading Flower Refrigerator with Illuminated Advertising Sign
Flower Cabinet	Designed to extend the shelf life of fresh flowers
Capacity	1384 Litres (Gross)
Dimensions	1640W x 762D x 2220H
Weight	265 Kg
Florist Benefits	Temperature Management for flowers
Colours	Ebony Black, and Snow White
Power Point	220 - 240v 50Hz. (Standard GPO)
Input Current	3.2 Amps
Thermometer	Digital
Shelves	12 Height Adjustable Heavy Duty PVC Coated
Shelves	3 Fixed Stainless Steel Base Shelves
Shelf Adjustment	12mm Increments
Door	3 x Front self Closing, Double Glazed Safety Glass, Double Heat reflective Low E, Warm edge 3 x Rear self closing block doors
Footings	Heavy Duty Castors, Lockable Front
Interior Light	LED, Automatic and manual control
Refrigerant	R134a
Cabinet Classes	3M1, 4M1, 5M1
MEPS	Compliant (High Efficiency)
* Energy Consumption	6.03 kWh/24h
Condenser Filter	Easy front access
Illuminated Advertising Sign	200mm High, Top Mounted
Sign Illumination	LED, Automatic and manual control

**RRP : \$6480 + GST (Rear Loading)**  
**Orford EB45R-Sn-PT- Flower**



IP Protected by AUS DSN no 345317  
& Patent NO 2013100761



This specialty Flower Fridge has rear doors allowing you to load the fridge from the rear. Rear loading fridges provide you with more decorating options in your shop



Flower Fridges 4 U

For more information on the Orford Refrigeration flower fridge Range including features & benefits refer to

[www.flowerfridges4u.com.au](http://www.flowerfridges4u.com.au)



Preserve Working Capital while accessing premium equipment

Orford has partnered with QPF Finance to enable quick and easy finance on your equipment purchase.

Phone : 1300 ORFORD (1300 673 673) or email us on [Sales@orford.com.au](mailto:Sales@orford.com.au)

Do you have an ABN?  
Contact us for a trade discount!

**YOURS TODAY:**  
EB36R-Sn



Weekly payments from:  
**\$36\***

- ✓ Extensive lender panel
- ✓ Conserve working capital
- ✓ 24 hour approvals
- ✓ No financials required

Call Jessica on 1300 736 780 for more details.



\*Subject to credit approval. Payments based on a lease contract over five years with a 5% residual. The lease amount has been rounded to the nearest dollar.

**YOURS TODAY:**  
EB45R-Sn



Weekly payments from:  
**\$45\***

- ✓ Extensive lender panel
- ✓ Conserve working capital
- ✓ 24 hour approvals
- ✓ No financials required

Call Jessica on 1300 736 780 for more details.



\*Subject to credit approval. Payments based on a lease contract over five years with a 5% residual. The lease amount has been rounded to the nearest dollar.



Refresh your brand with fabulous artwork. Contact Orford Digital for more information. Phone us : 1300 673 673  
www.orforddigital.com.au

Do you have an ABN?  
Contact us for a trade discount!



2 door size RRP \$70 + GST

3 door size RRP \$95 + GST



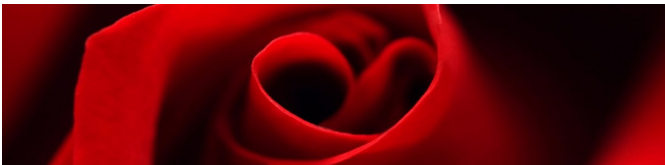
Email us on :

[sales@flowerfridges4u.com.au](mailto:sales@flowerfridges4u.com.au) or

[sales@orford.com.au](mailto:sales@orford.com.au)



Phone us on : 1300 673 673



Website:

[www.orford.com.au](http://www.orford.com.au)

[www.flowerfridges4u.com.au](http://www.flowerfridges4u.com.au)

[www.orforddigital.com.au](http://www.orforddigital.com.au)



Head Office & Postal Address

382 South St

Harristown, Qld 4350

National sales :

[sales@orford.com.au](mailto:sales@orford.com.au)

1300 ORFORD (1300 673 673)

Phone : +61 7 46 345 278

Key Websites :

[www.flowerfridges4u.com.au](http://www.flowerfridges4u.com.au)

[www.orford.com.au](http://www.orford.com.au)

Showroom (By Appointment Only)

39 Dunhill Crescent

Morningside, Qld 4170

Phone 0418 700 006 for appointment

[www.orford.com.au](http://www.orford.com.au)

[Www.facebook.com/theorfordgroup](http://Www.facebook.com/theorfordgroup)

Key Patents:

AUS DSN no 345317

Patent No 2013100761

“Orford” is protected by Trademark No 1452870

“Planetsmart” is protected by Trademark No  
1358049

“Flower Fridges 4U” is protected by Trademark No  
1746609

All images are subject to copyright and cannot be reproduced without permission

All efforts are made to ensure the accuracy of information, but from time to time errors may occur. Please check prior to placing orders. This publication serves as a guide to the Orford and partner products. Readers are encouraged to contact Orford prior to making final purchasing decisions